

2019



The World of Research and the Solar Systems that Keep it Spinning

ILLUMINATING RESEARCH
SUPPORT AND RESOURCES AT
KETTERING HEALTH NETWORK

Research Institute: One Door to Research

Aligning the Research Solar
Systems and Navigating the
World of Research



- ▶ Today's Mission
 - ▶ Introduction to the Research Institute Model
 - ▶ Overview of the departments and services of the Research Institute

Importance of Research at KHN

2019

Our Mission:

The Research Institute champions quality and ethical research that advances innovative healthcare and improves the quality of life for the communities we serve.

- ▶ *“Today’s standard of care was yesterday’s research”*
- ▶ Patient benefits
- ▶ Physician/Clinician benefits
- ▶ Institution benefits
- ▶ Local communities benefit

Research Integrity

- Institutional Review Board (IRB)
- Research Compliance
- Conflict of Interest (COI) Related to Research
- Research Related HIPAA
- Research Education

Innovation, Research & Grants

- Sponsored Research and Clinical Trials Unit
- Grant Seeking & Administration
- Service Line Research Support
- GME Research Support
- Research Education

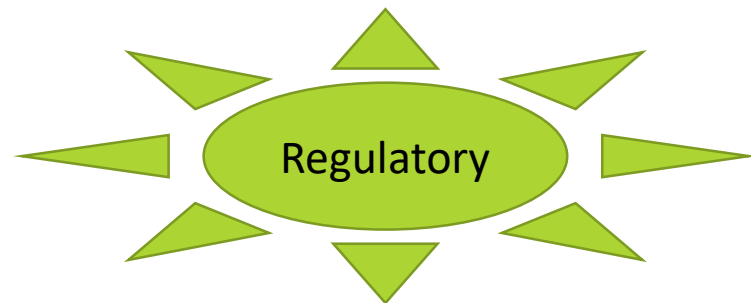
Medical Library Services

Regulatory Solar System: Research Integrity

2019

North Star: **Who We Are**

- ▶ **Regulatory** side of research
- ▶ Provide **institutional oversight of research** conducted at KHN or by a KHN employee
- ▶ Manage **Conflicts of Interest** and **HIPAA** related to research



NASA Headquarters: **Why We Exist**

- ▶ **Research regulation oversight is mandated** by Dept. of Health and Human Services (Office of Human Research Protection) and the U.S. Food and Drug Administration
- ▶ **Protect the rights and welfare** of human research participants

Regulatory Aerospace

2019

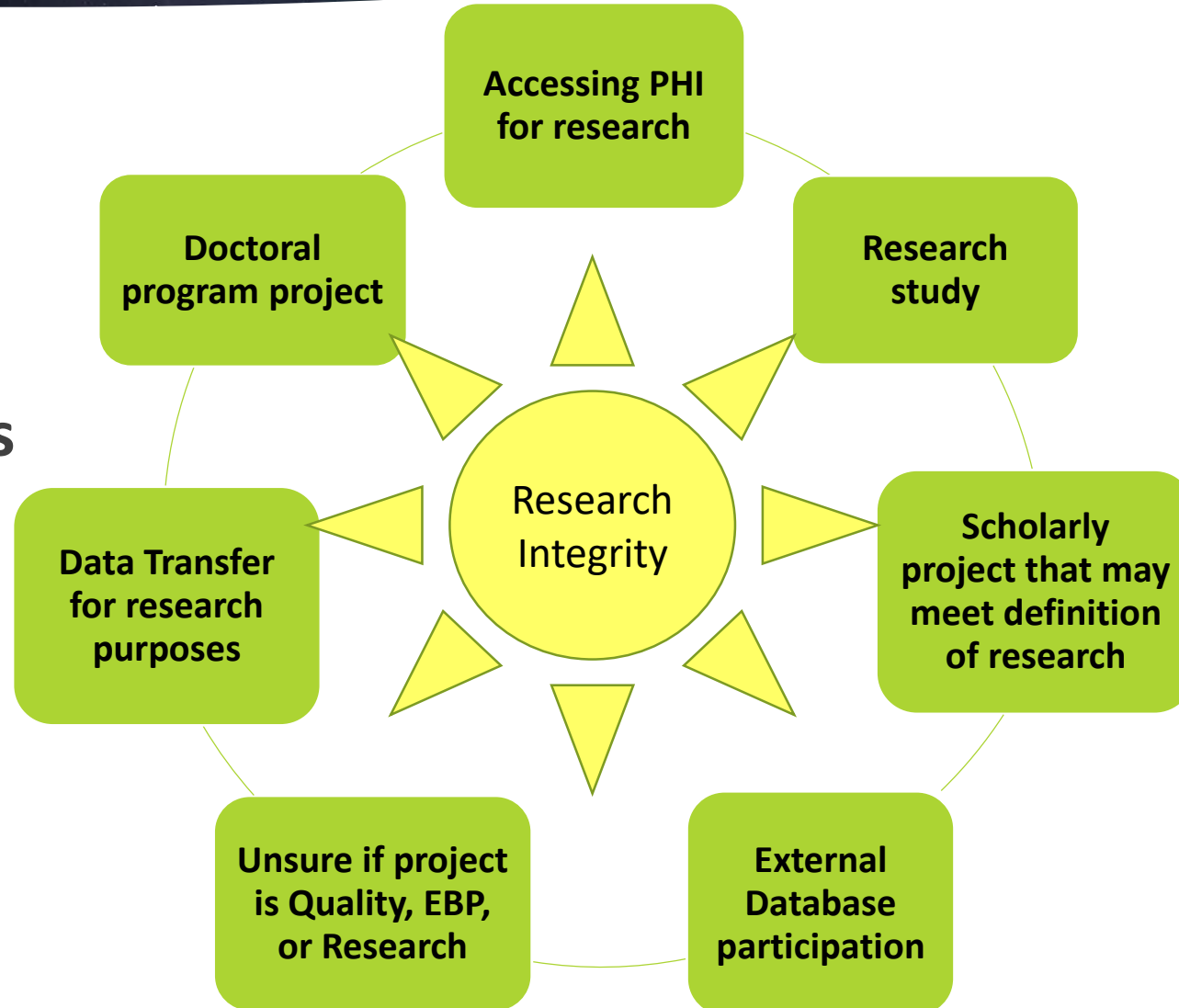
▶ **Mission Control: What We Do**

- ▶ Manage the Institutional Review and Privacy Board and Conflict of Interest Committee
- ▶ Oversee IRB, HIPAA, and COI review processes to ensure compliant with federal and state research regulations
- ▶ Direct the Human Research Protection and Research Compliance Programs
- ▶ Ensure research data release adheres to HIPAA research regulations
- ▶ Educate and guide investigators as they navigate IRB, HIPAA, and COI processes

Research Integrity: Launching Pad

2019

Lift Off Navigation:
When to Contact Us



Research Integrity Crew

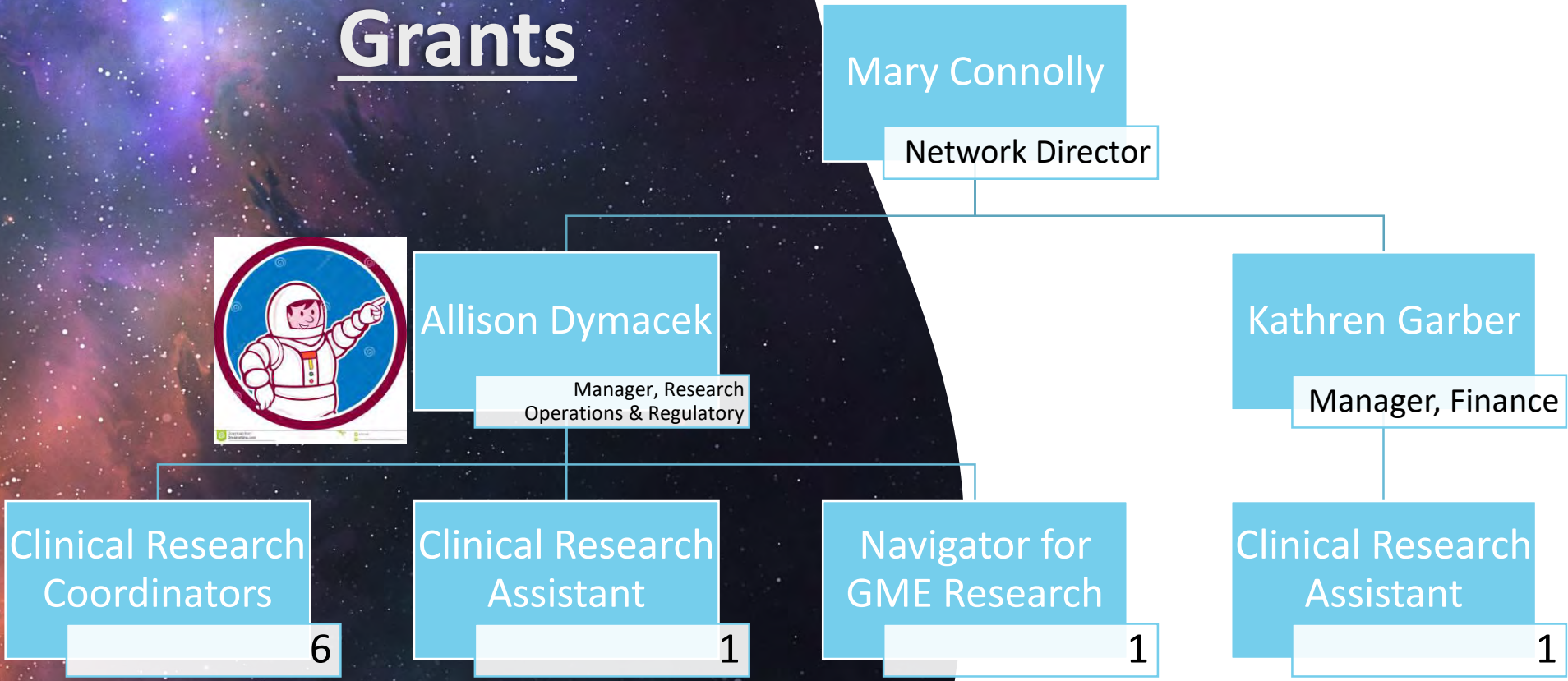
2019

- ▶ Main satellite number: 395-8401
- ▶ Main base: KMC, 4NW hallway; use West Elevators
- ▶ IRB Coordinators
 - ▶ **Jessica Prim**, BS, CCRP, CIP; jessica.prim@ketteringhealth.org
 - ▶ **Ann Williams**, BS, CCRP; ann.williams@ketteringhealth.org
- ▶ Research Integrity Director
 - ▶ **Cheri Rotterman**, PhD, RN, NE-BC;
cheryl.rotterman@ketteringhealth.org

Innovation, Research & Grants

Our Space Pilots and the Planets We Travel

2019



- Areas of Expertise**
- Oncology
 - Heart and Vascular
 - Brain and Spine
 - Pulmonary
 - Imaging
 - Nuclear Medicine
 - Pain Management
 - Surgery
 - Orthopedics
 - Plastic Surgery
 - Urology



Clinical Trials

- Centralized business function with financial and regulatory expertise
- Industry sponsored research (device and pharma)



Investigator Initiated

- GME support for faculty and residents
- Assist investigators with their own research project idea
 - Team creation
 - Seeking funding
 - Assist with study design and protocol development
 - Regulatory
 - Contracting and budgets
 - Oversight



Grants

- Find grant opportunities
- Support grant writing
- Facilitate communication with funding agencies
- Reminder: Give plenty of notice, grants take time!

Where in the World are we?

2019

Our office is located on Kettering Medical Center Campus in the Boonshoft Building, Suite 2200.

Often travel offsite as well to serve the whole network.



Hours of Operation:
Monday through Friday 8:00 – 4:30

Don't know where to start your
quest? Call us!

937-395-8365



This Photo by Unknown
Author is licensed under
CC BY-NC

KETTERING
Health Network™

Mission Control: Medical Libraries

2019

- ▶ Medical Library Services offers numerous services and includes research support:
 - ▶ Literature Searches for patient care and research
 - ▶ **Patient care is #1 priority**
 - ▶ Librarians are available to perform literature searches for patient care
 - ▶ Access hard to find journals and articles, including full text
 - ▶ Never pay for an article, check with librarians first!
 - ▶ Interlibrary Loans
 - ▶ Among Medical Libraries, Universities, and Public Libraries across Ohio and the US
 - ▶ Training and instruction
 - ▶ How to search databases like PubMed, Clinical Key, OhioLink for research
 - ▶ Developing search strategies

The Crew: Graduate Medical Education Research

2019

- ▶ Residents and Graduate medical students design and conduct research projects as part of their educational requirements
- ▶ Common types of studies conducted: Quality Improvement/Performance Improvement, Retrospective Chart Reviews, Case Studies, and Prospective Studies
- ▶ Integrate evidence-based best practices into workflow

Mission Control for GME Research: Where do I go for help?

2019

▶ **Stephanie Balsom, MPH, BSN, RN, MT (ASCP)**

▶ Network Navigator for GME Research

▶ 937-723-4158

▶ **Medical Libraries**

▶ Grandview Medical Center: Rieck Building, 2nd Floor

▶ Candy Winteregg, MHSA, CKM, CKP, Medical Library Manager

▶ Bette Sydelko, MSLS, Med, AHIP, Medical Librarian

▶ 937-723-3379

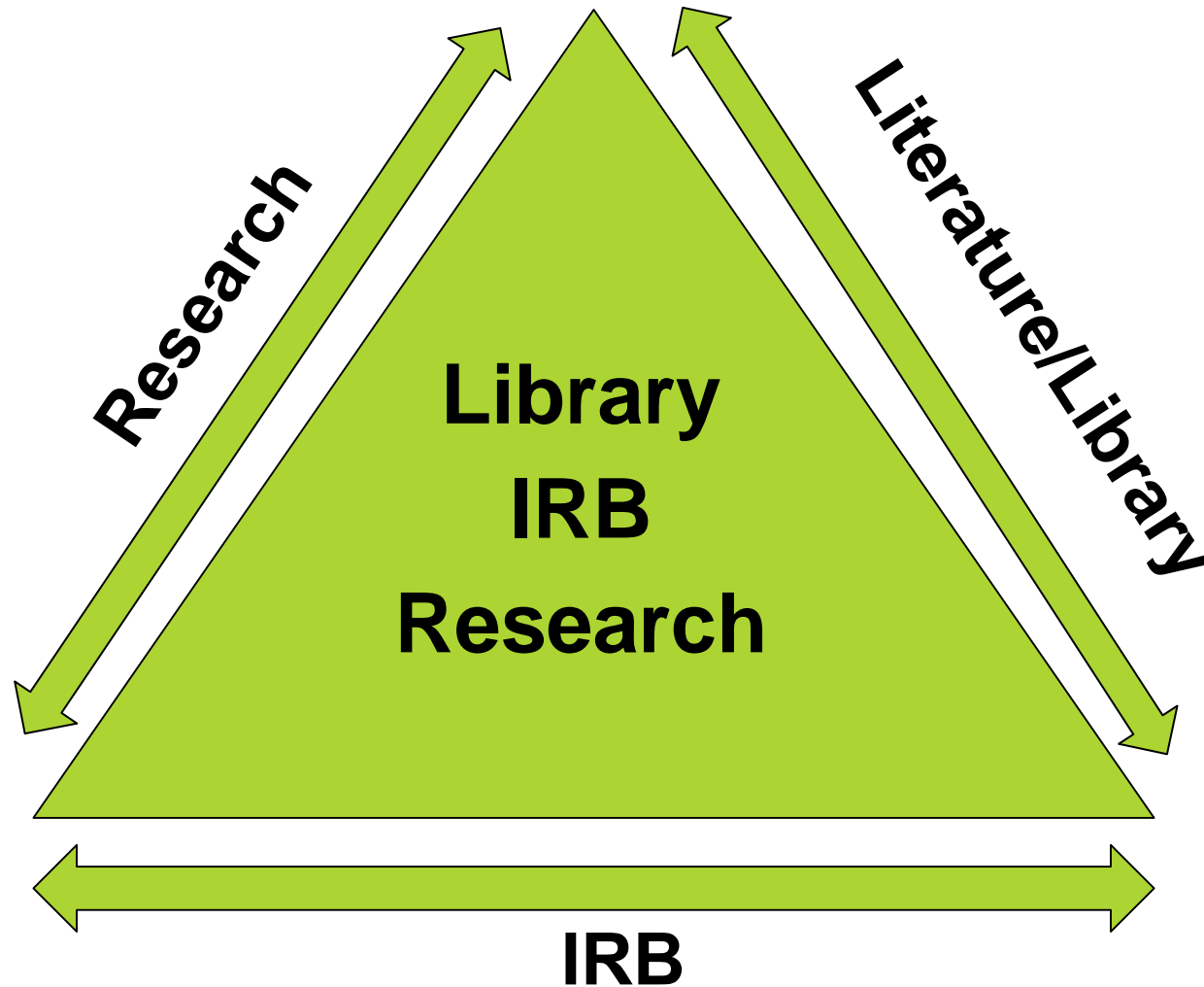
▶ Kettering Medical Center: Ground Floor by Dean Amphitheater

▶ Margaret Chappell, MLS, Medical Librarian

▶ 937-935-8815

Getting into Orbit

2019



The Next Frontier – Future Plans

2019

- ▶ New integrated web page
- ▶ New software and technology
- ▶ Annual educational events
- ▶ Facilitating partnerships
 - ▶ Government, industry, and academic institutions



[This Photo](#) by Unknown Author is licensed under [CC BY-NC-ND](#)